




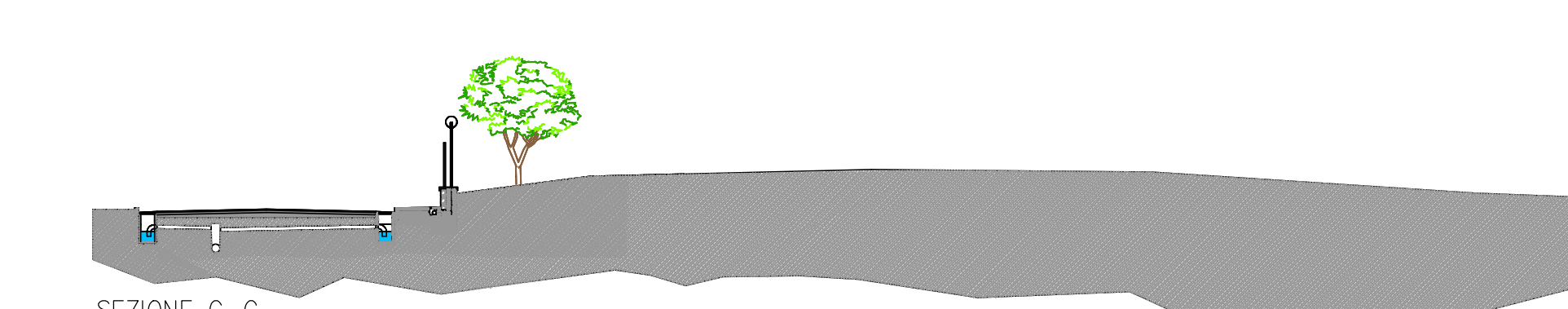
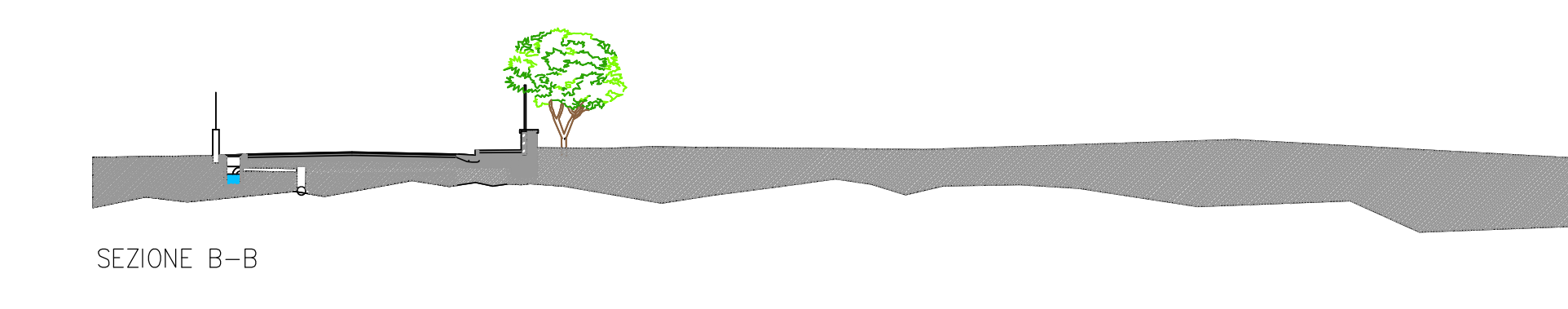
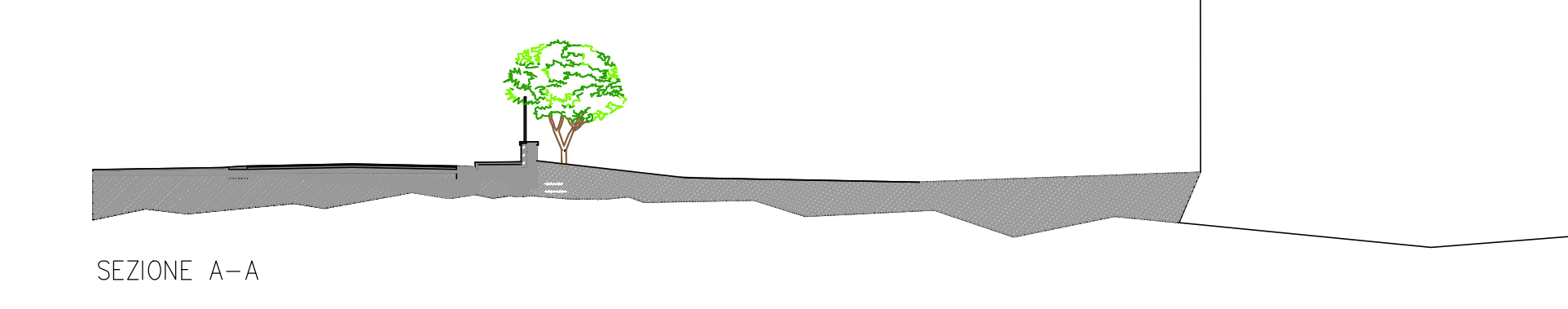
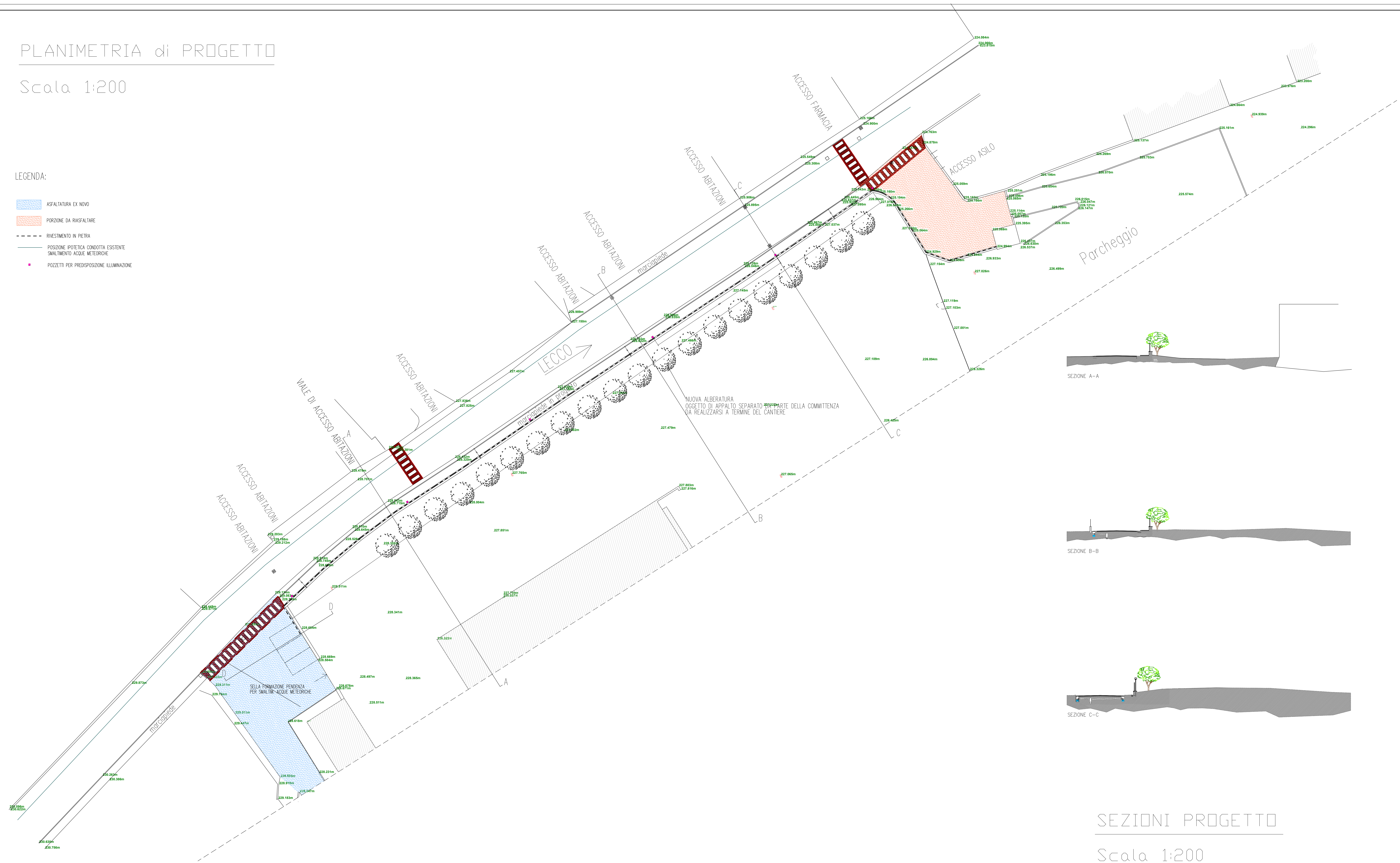


PLANIMETRIA di PROGETTO

Scala 1:200

LEGENDA:

-  ASFALTATURA EX NOVO
-  PORZIONE DA RIASFALTARE
-  RIVESTIMENTO IN PIETRA
-  POSIZIONE IPOTERICA CONDOTTA ESISTENTE SMALTIMENTO ACQUE METEORICHE
-  POZZETTI PER PREDISPOSIZIONE ILLUMINAZIONE



SEZIONI PROGETTO

Scala 1:200

	Dr. Arch. LIBERTI MARIO Viale S. Maria n. 3 20133 CORTINA Telefono: 0344/964100 Fax: 0344/963972 Cellulare: 349.984.1972/317478 Partito: IAN - 073/336331	894 NOVEMBRE 2023	Tavola N. 4
	committente: COMUNE DI VALGREGHENTINO	progetto di: REALIZZAZIONE NUOVO MARCIAPIEDE - PLANIMETRIA E SEZIONI PROGETTO Scala 1:200	PROGETTO DEFINITIVO - ESECUTIVO
il progettista	il sindaco		